

Tabouret Ola H65 M LG

design Paolo Vernier, 2016

Tabouret avec structure en acier peint et assise et dossier en bois.



Couleurs et matériaux

Structure



Acier blanc



Acier corde



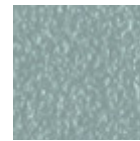
Acciaio Jaune Pastel



Acier graphite



Acier noir



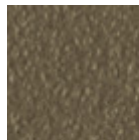
Acier Bleu Ciel



Acier Bleu Ocean



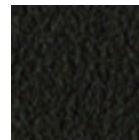
Acier Bronze



Acier Fango



Acier Gris Claire



Acier marron



Acier Ocre



Acier Rose Poudre

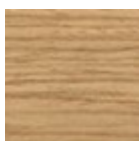


Acier Vert Saugé



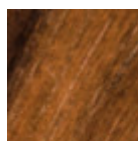
Acciaio rosso

Revêtement



Plaqué laqué

9 Couleurs



Plaqué noyer flammé

Dimensions

Image not found or type unknown

Dimensions

	cm	inch
A	90	35.4

	cm	inch
B	50	19.7
C	51	20.1
D	65	25.6

Données volumétriques

Poids 9 Kg

Volume 0.26 mc

Colis 1