

KETTAL

Object

Egg swing

Designer

Patricia Urquiola

Collection

Kettal Maia

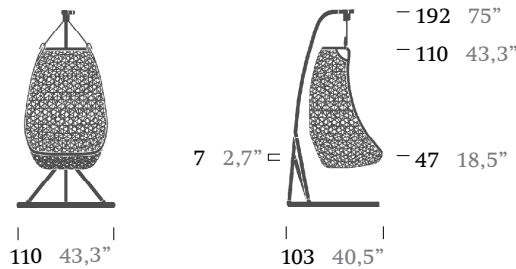
Reference

65800/ 65852/ 65810



Dimensions

(cm / inch)



Standard Finishes

Aluminium

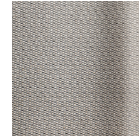


726
Manganese



079
Bone

Fabric

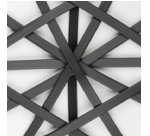


289
Fog Laminate

Rope & Weave



003
White fibre



075
Chestnut fibre



410
Marengo rope

Materials

Synthetic Fiber

Antioxy, Heavy Load, Resistant En-1421, Kettalize-It, Anti-Scratch, Easy Clean, Flame Retardant M1, Eco Friendly Ecoembes Recycling Process

Fabric

Heavy Load 100.000 Cycles, Heavy Load Resistant 1000 Decitex, Kettalize-It, Resist U.V. En-581-4, Easy Clean, Abrasion, Resistance 30.000 Cycles, Quickdry

Aluminium

Antioxy, Heavy Load, Resistant En-1421, Kettalize-It, Anti-Scratch, Easy Clean, Flame Retardant M1, Eco Friendly Ecoembes Recycling Process

Rope

Antioxy, Resist U.V. En-581-4, Easy Clean

Optional Colours

Fabric, Laminate Fabric, Geometrics Fabrics

Characteristics

Frame

Units box 1
Box Weight 13,7 Kg / 30,2 Lbs
Box Volume 1,15 m³ / 40,6 cft.

Seat cushion

Units box 1
Box Weight 0,82 Kg / 1,8 Lbs
Box Volume 0,3 m³ / 10,5cft.
C.M.O. 1,60 ml

Base

Units box 1
Box Weight 21,38 Kg / 47,13 Lbs
Box Volume 0,44 m³ / 15,5 cft.